

SkyLine Premium Natural Gas Combi Oven 6GN1/1



227860 (ECOG61BEU0)

SkyLine Premium combi boiler oven with digital control, 6x1/1GN, gas, programmable, automatic cleaning

Short Form Specification

Item No.

Combi oven with digital interface with guided selection.

- Built-in steam generator with real humidity control based upon Lambda Sensor.
- OptiFlow air distribution system to achieve maximum performance with 5 fan speed levels.
- SkyClean: Automatic and built-in self cleaning system with integrated descale of the steam generator. 5 automatic cycles (soft, medium, strong, extra strong, rinse-only).
- Cooking modes: Programs (a maximum of 100 recipes can be stored); Manual (steam, combi and convection cycles); EcoDelta cooking cycle; Regeneration cycle.
- Automatic backup mode to avoid downtime.
- USB port to download HACCP data, programs and settings. Connectivity ready.
- Single sensor core temperature probe.
- Double-glass door with LED lights.
- Stainless steel construction throughout.
- Supplied with n.1 tray rack 1/1 GN, 67 mm pitch.

Main Features

- Digital interface with LED backlight buttons with guided selection.
- Built-in steam generator for highly precise humidity and temperature control according to the chosen settings.
- Real humidity control based upon Lambda Sensor to automatically recognize quantity and size of food for consistent quality results.
- Dry, hot convection cycle (25 °C - 300 °C): ideal for low humidity cooking.
- Combination cycle (25 °C - 300 °C): combining convected heat and steam to obtain humidity controlled cooking environment, accelerating the cooking process and reducing weight loss.
- Low temperature Steam cycle (25 °C - 99 °C): ideal for sous-vide, re-thermalization and delicate cooking. Steam cycle (100 °C): seafood and vegetables. High temperature steam (25 °C - 130 °C).
- EcoDelta cooking: cooking with food probe maintaining preset temperature difference between the core of the food and the cooking chamber.
- Pre-set program for Regeneration, ideal for banqueting on plate or rethermalizing on tray.
- Programs mode: a maximum of 100 recipes can be stored in the oven's memory, to recreate the exact same recipe at any time. 4-step cooking programs also available.
- OptiFlow air distribution system to achieve maximum performance in cooking evenness and temperature control thanks to a special design of the cooking chamber combined with high precision variable speed fan and venting valve.
- Fan with 5 speed levels from 300 to 1500 RPM and reverse rotation for optimal evenness. Fan stops in less than 5 seconds when door is opened.
- Single sensor core temperature probe included.
- Automatic fast cool down and pre-heat function.
- Reduced power function for customized slow cooking cycles.
- SkyClean: Automatic and built-in self cleaning system with integrated descale of the steam generator. 5 automatic cycles (soft, medium, strong, extra strong, rinse-only).
- 3 different chemical options available: solid (phosphate-free), liquid (requires optional accessory), enzymatic.
- GreaseOut: predisposed for integrated grease drain and collection for safer operation (dedicated base as optional accessory).
- USB port to download HACCP data, share cooking programs and configurations. USB port also allows to plug-in sous-vide probe (optional accessory).
- Connectivity ready for real time access to connected appliances from remote and HACCP monitoring (requires optional accessory).
- Back-up mode with self-diagnosis is automatically activated if a failure occurs to avoid downtime.
- [NOT TRANSLATED]

APPROVAL:

- [NOT TRANSLATED]

Construction

- Human centered design with 4-star certification for ergonomics and usability.
- Wing-shaped handle with ergonomic design and hands-free opening with the elbow, making managing trays simpler (Registered Design at EPO).
- Double thermo-glazed door with open frame construction, for cool outside door panel. Swing hinged easy-release inner glass on door for easy cleaning.
- Seamless hygienic internal chamber with all rounded corners for easy cleaning.
- 304 AISI stainless steel construction throughout.
- Front access to control board for easy service.
- IPX 5 spray water protection certification for easy cleaning.
- Supplied with n.1 tray rack 1/1 GN, 67 mm pitch.

Optional Accessories

- Water softener with cartridge C500 for 6 1/1 and 10 1/1 ovens (low-medium steam usage - less than 2hrs per day full steam) PNC 920002 ☐
- Water softener with cartridge STEAM 1200 PNC 920003 ☐
- Automatic water softener for ovens PNC 921305 ☐
- Resin sanitizer for water softener PNC 921306 ☐
- Castor kit for base for 6&10x1/1 and 2/1 GN ovens PNC 922003 ☐
- Pair of 1/1 GN AISI 304 grids PNC 922017 ☐
- Couple of grids for whole chicken 1/1GN (8 per grid) PNC 922036 ☐
- ONE 1/1GN AISI 304 GRID FOR AOS OVEN USA PNC 922062 ☐
- Grid for whole chicken 1/2GN (4 per grid - 1,2kg each) PNC 922086 ☐
- Side external spray unit (needs to be mounted outside and includes support for mounting to oven) PNC 922171 ☐
- Baking tray with 5 rows (baguette), perforated aluminium with silicon coating (400x600x38) PNC 922189 ☐
- Baking tray with 4 edges, perforated aluminium (400x600x20) PNC 922190 ☐
- Baking tray with 4 edges, aluminium (400x600x20) PNC 922191 ☐
- 2 frying baskets for ovens PNC 922239 ☐
- Pastry grid, 400x600mm, AISI 304 stainless steel PNC 922264 ☐
- Double-click closing catch for door PNC 922265 ☐
- Grid for whole chicken 1/1GN (8 per grid - 1,2kg each) PNC 922266 ☐
- Fat collection tray 100 mm PNC 922321 ☐
- Kit universal skewer rack and 4 long skewers for Lengthwise ovens PNC 922324 ☐
- Universal skewer rack PNC 922326 ☐

- 4 long skewers PNC 922327 ☐
- Smoker for lengthwise and crosswise ovens - 4 kinds of smoker wood chips are available on request PNC 922338 ☐
- Water filter for ovens - 2 membranes PNC 922342 ☐
- External reverse osmosis filter for ovens - 2 membranes PNC 922343 ☐
- Multipurpose hook PNC 922348 ☐
- 4 FLANGED FEET FOR 6&10 GN - 2 " 100-130MM PNC 922351 ☐
- GRID FOR 8 WHOLE DUCKS (1.8KG) - GN 1/1 PNC 922362 ☐
- TRAY SUPPORT FOR 6&10 GN 1/1 DISASSEMBLED OVEN BASE PNC 922382 ☐
- HOLDER FOR DETERGENT TANK - WALL MOUNTED PNC 922386 ☐
- TRAY RACK WITH WHEELS 6 GN 1/1 - 65MM PITCH PNC 922600 ☐
- TRAY RACK WITH WHEELS 5 GN 1/1 - 80MM PITCH PNC 922606 ☐
- BAKERY/PASTRY RACK WITH WHEELS FOR 6 GN 1/1 OVEN - 5 RACKS 400X600MM - 80MM PITCH PNC 922607 ☐
- SLIDE-IN RACK WITH HANDLE FOR 6&10 GN 1/1 OVEN PNC 922610 ☐
- OPEN BASE WITH TRAY SUPPORT FOR 6&10 GN 1/1 OVEN PNC 922612 ☐
- CUPBOARD BASE WITH TRAY SUPPORT FOR 6&10 GN 1/1 OVEN PNC 922614 ☐
- HOT CUPBOARD BASE WITH TRAY SUPPORT FOR 6&10 GN 1/1 OVEN & 400X600MM PNC 922615 ☐
- GREASE COLLECTION KIT FOR CUPBOARD BASE GN 1/1-2/1 (TROLLEY WITH 2 TANKS, OPEN/CLOSE DEVICE AND DRAIN) PNC 922619 ☐
- STACKING KIT FOR GAS 6 GN 1/1 OVEN ON GAS 6 GN 1/1 OVEN - H=150MM PNC 922622 ☐
- STACKING KIT FOR GAS 6 GN 1/1 OVEN ON GAS 10 GN 1/1 OVEN - H=150MM PNC 922623 ☐
- TROLLEY FOR SLIDE-IN RACK FOR 6&10 GN 1/1 OVEN AND BLAST CHILLER FREEZER PNC 922626 ☐
- TROLLEY FOR MOBILE RACK FOR 2 STACKED 6 GN 1/1 OVENS ON RISER PNC 922628 ☐
- TROLLEY FOR MOBILE RACK FOR 6 GN 1/1 ON 6 OR 10 GN 1/1 OVENS PNC 922630 ☐
- RISER ON FEET FOR STACKED 2X6 GN 1/1 OVENS OR 6 GN 1/1 OVEN ON BASE PNC 922632 ☐
- RISER ON WHEELS FOR STACKED 2X6 GN 1/1 OVENS - H=250MM PNC 922635 ☐
- STAINLESS STEEL DRAIN KIT FOR 6&10 GN OVEN - DIA=50MM PNC 922636 ☐
- PLASTIC DRAIN KIT FOR 6&10 GN OVEN - DIA=50MM PNC 922637 ☐
- Grease collection kit for open base (2 tanks, open/close device and drain) PNC 922639 ☐
- WALL SUPPORT FOR 6 GN 1/1 OVEN PNC 922643 ☐
- DEHYDRATION TRAY - GN 1/1 H=20MM PNC 922651 ☐
- DEHYDRATION TRAY - GN 1/1 FLAT PNC 922652 ☐
- OPEN BASE FOR 6&10 GN 1/1 OVEN - DISASSEMBLED - NO ACCESSORY CA BE FITTED WITH THE EXCEPTION OF 922382 PNC 922653 ☐

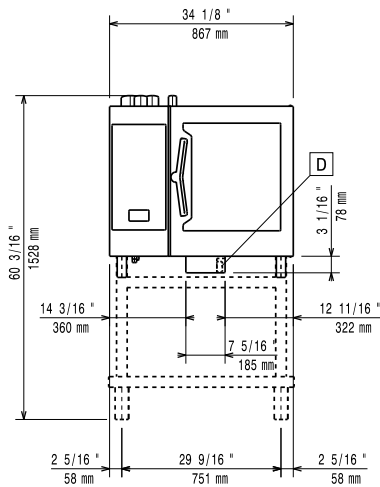
- | | |
|--|---|
| <ul style="list-style-type: none"> • BAKERY/PASTRY RACK FOR 6 GN 1/1 OVEN - 5 RACKS 400X600MM - 80MM PITCH PNC 922655 <input type="checkbox"/> • STACKING KIT FOR 6&10 GN 1/1 OVEN ON 7KG & 15KG CROSSWISE BLAST CHILLER/BLAST FREEZER PNC 922657 <input type="checkbox"/> • HEAT SHIELD FOR STACKED OVENS 6 GN 1/1 ON 6 GN 1/1 PNC 922660 <input type="checkbox"/> • HEAT SHIELD FOR STACKED OVENS 6 GN 1/1 ON 10 GN 1/1 PNC 922661 <input type="checkbox"/> • HEAT SHIELD FOR 6 GN 1/1 OVEN PNC 922662 <input type="checkbox"/> • KIT TO CONVERT FROM NATURAL GAS TO LPG PNC 922670 <input type="checkbox"/> • KIT TO CONVERT FROM LPG TO NATURAL GAS PNC 922671 <input type="checkbox"/> • FLUE CONDENSER FOR GAS OVENS PNC 922678 <input type="checkbox"/> • FIXED TRAY RACK FOR 6 GN 1/1 AND 400X600MM PNC 922684 <input type="checkbox"/> • KIT TO FIX OVEN TO THE WALL PNC 922687 <input type="checkbox"/> • TRAY SUPPORT FOR OVEN BASE 6&10 GN 1/1 OVEN PNC 922690 <input type="checkbox"/> • 4 adjustable feet with black cover for 6 & 10 GN ovens, 100-115mm PNC 922693 <input type="checkbox"/> • WIFI BOARD (NIU) PNC 922695 <input type="checkbox"/> • HOLDER FOR DETERGENT TANK ON OPEN BASE PNC 922699 <input type="checkbox"/> • PASTRY RUNNERS FOR 6&10 GN 1/1 OVEN BASE - 400X600MM PNC 922702 <input type="checkbox"/> • WHEELS FOR STACKED OVENS PNC 922704 <input type="checkbox"/> • - NOT TRANSLATED - PNC 922706 <input type="checkbox"/> • SPIT FOR LAMB OR SUCKLING PIG (UP TO 12 KG) FOR GN 1/1 OVENS PNC 922709 <input type="checkbox"/> • MESH GRILLING GRID PNC 922713 <input type="checkbox"/> • PROBE HOLDER FOR LIQUIDS PNC 922714 <input type="checkbox"/> • EXHAUST HOOD WITH FAN FOR 6&10 GN 1/1 OVEN PNC 922728 <input type="checkbox"/> • EXHAUST HOOD WITHOUT FAN FOR 6&10 GN 1/1 OVEN PNC 922733 <input type="checkbox"/> • FIXED TRAY RACK 5 GN 1/1 - 85MM PITCH PNC 922740 <input type="checkbox"/> • 4 HIGH ADJUSTABLE FEET FOR 6&10 GN OVENS - 230-290MM PNC 922745 <input type="checkbox"/> • TRAY FOR TRADITIONAL STATIC COOKING - H=100MM PNC 922746 <input type="checkbox"/> • DOUBLE-FACE GRIDDLE (RIBBED AND SMOOTH) FOR OVENS - 400X600MM PNC 922747 <input type="checkbox"/> • Trolley for grease collection kit PNC 922752 <input type="checkbox"/> • - NOT TRANSLATED - PNC 922773 <input type="checkbox"/> • Non-stick universal pan 1/1GN H=20mm PNC 925000 <input type="checkbox"/> • Non-stick universal pan 1/1GN H=40mm PNC 925001 <input type="checkbox"/> • Non-stick universal pan 1/1GN H=60mm PNC 925002 <input type="checkbox"/> | <ul style="list-style-type: none"> • Frying griddle GN 1/1 for ovens PNC 925003 <input type="checkbox"/> • Aluminium oven grill GN 1/1 PNC 925004 <input type="checkbox"/> • FRYING PAN FOR 8 EGGS, PANCAKES, HAMBURGERS - GN 1/1 PNC 925005 <input type="checkbox"/> • FLAT BAKING TRAY WITH 2 EDGES - GN 1/1 PNC 925006 <input type="checkbox"/> • BAKING TRAY FOR 4 BAGUETTES - GN 1/1 PNC 925007 <input type="checkbox"/> • Potato baker GN 1/1 for 28 potatoes PNC 925008 <input type="checkbox"/> • Non-stick universal pan GN 1/2, H=20mm PNC 925009 <input type="checkbox"/> • Non-stick universal pan GN 1/2, H=40mm PNC 925010 <input type="checkbox"/> • Non-stick universal pan GN 1/2, H=60mm PNC 925011 <input type="checkbox"/> • COMPATIBILITY KIT FOR INSTALLATION ON PREVIOUS RANGE BASE GN 1/1 PNC 930217 <input type="checkbox"/> |
|--|---|



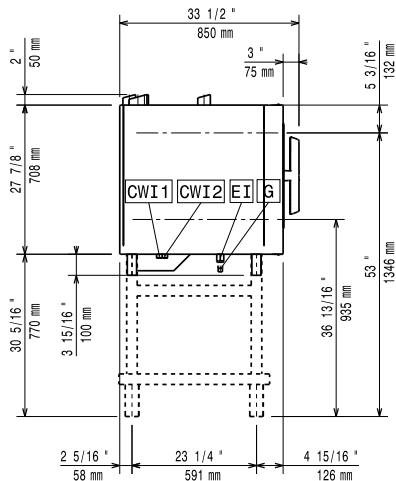
WA DEALER
PRACTICAL PRODUCTS PTY LTD

PH: 08 9302 1299
 51 Paramount Dr Wangara WA 6065
sales@practicalproducts.com.au
www.practicalproducts.com.au

Front

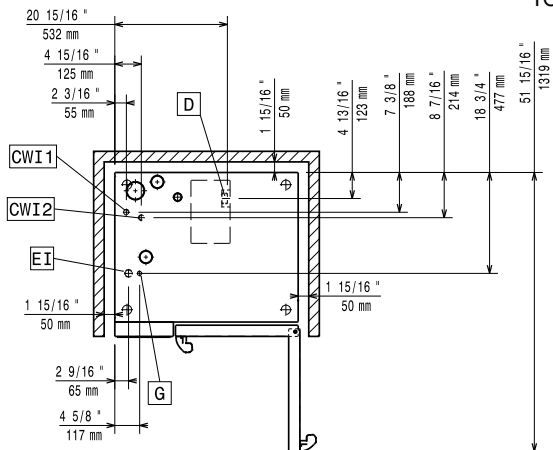


Side



- CWI1 = Cold Water inlet 1
 CWI2 = Cold Water Inlet 2
 D = Drain
 DO = Overflow drain pipe
 EI = Electrical inlet (power)
 G = Gas connection

Top



Electric

Supply voltage:	227860 (ECOG61BEU0)	230-240 V/1 ph/50 Hz
Electrical power, default:		1.1 kW
Electrical power max.:		1.1 kW
Circuit breaker required		

Gas

Gas Power:	20.5 kW
Standard gas delivery:	Natural Gas G20
ISO 7/1 gas connection diameter:	1/2" MNPT
LPG:	
Total thermal load:	76429 BTU (20.5 kW)

Water:

Water inlet "FCW" connection:	3/4"
Pressure, bar min/max:	1-4.5 bar
Drain "D":	50mm
Max inlet water supply temperature:	30 °C
Chlorides:	<17 ppm
Conductivity:	>285 µS/cm
Electrolux recommends the use of treated water, based on testing of specific water conditions.	
Please refer to user manual for detailed water quality information.	

Installation:

Clearance:	Clearance: 5 cm rear and right hand sides.
Suggested clearance for service access:	50 cm left hand side.

Capacity:

GN:	6 - 1/1 Gastronorm
Max load capacity:	30 kg

Key Information:

Door hinges:	Right Side
External dimensions, Width:	867 mm
External dimensions, Height:	808 mm
External dimensions, Depth:	775 mm
Weight:	137 kg
Net weight:	137 kg
Shipping weight:	152 kg
Shipping volume:	0.84 m ³



WA DEALER
PRACTICAL PRODUCTS PTY LTD

PH: 08 9302 1299
 51 Paramount Dr Wangara WA 6065
sales@practicalproducts.com.au
www.practicalproducts.com.au