

RS 600mm Static Ovens

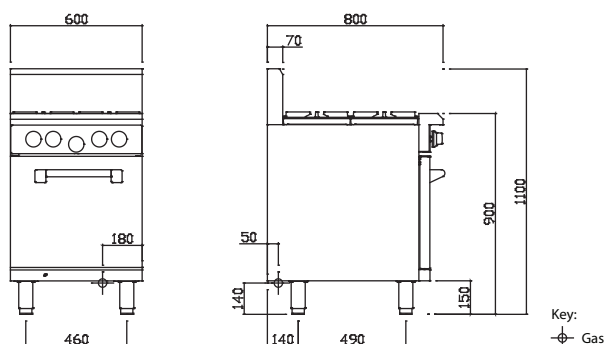


Technical Specifications for RS-4B, RS-6P, RS-2B3P, RS-2B3C



PROFESSIONAL SERIES

- Nickel plated 28 mj open burners (FFD optional extra)
- 24 mj oven burner & sole plate
- Piezo ignition & FFD included on oven burner
- French (swing) door oven access
- Burner, chargrill & hotplate combinations
- Heavy duty construction
- Easy to clean and service
- Modular Professional series design
- 15 month 'Platinum Warranty'



| | Model | Description | Nat Gas | LP Gas |
|--|---------|-----------------------------|---------|--------|
| | RS-4B | 4 burners & oven | 138 mj | 122 mj |
| | RS-6P | 600 grill & oven | 64 mj | 55 mj |
| | RS-2B3P | 2 burners, 300 grill & oven | 101 mj | 89 mj |
| | RS-2B3C | 2 burners, 300 bbq & oven | 111 mj | 102 mj |

Open Burners

- Nickel plated cast iron 28 mj dual-flame ring burners
- Flame failure and pilots available as an optional extra
- Variable flame control valve with low flame setting
- Heavy duty cast iron trivets (295mm x 300mm)
- Pressed 0.7mm 304 stainless steel spillage bowls

Oven

- 24mj oven burner with mild steel sole plate
- Oven flame failure, pilot & piezo ignition as standard
- 100-340° C thermostat control
- Internal cooking space: 440mm x 550mm x 300mm H
- Vitreous enamel 1.5mm internal oven door/wall lining
- Fibertex Rockwool insulation in oven walls & doors
- French (swing) doors for easy oven access
- 304 stainless steel 'cool touch' door handles
- Suits 1/1 Gastronorm size trays
- Chrome oven rack supports with 4 positions
- Supplied with 2 oven racks

Griddle/Hotplate

- 20 mj burners with pilot, FFD and piezo ignition
- 16mm thick mild steel griddle plate
- RS-6P plate: 590mm x 540mm; 0.32m² cooking area
- RS-2B3P plate: 290mm x 540mm; 0.16m² cooking area
- 2mm 304 stainless steel splash guards

Chargrill/Barbecue

- 30 mj burners with pilot, FFD and piezo ignition
- J shaped reversible cast iron grates
- RS-2B3C bbq: 280mm x 520mm; 1.456m² cooking area

Overall Construction

- Heavy duty construction
- Welded 1.2mm 304 stainless steel front hob
- Front, side & door panels 0.9mm 304 stainless steel
- Splashback 1.2 mm 304 stainless steel
- Stainless steel feet with 55mm height adjustment range
- Secondary catchment tray 0.9mm stainless steel

Dimensions

- 600mm x 800mm x 1100mm H
- Working height 900mm
- Weight 130kg
- Packed dimensions 640mm x 860mm x 1260mm H
- Packed weight 150kg

Connections

- Gas 3/4" BSP male
- 180mm from right, 50mm from rear, 140mm from floor
- Supplied with gas regulator (specify Nat or LP on order)

Cleaning & Servicing

- Removable burners, hoods and spillage bowls
- Secondary undertray to catch any additional waste
- Oven racks, supports and sole plate easy to remove
- Easy access to all parts & components from front

Options/Accessories

- Rear castors
- FFD & pilots to open burners
- Ribbed or chrome finish on hotplates
- RH and LH side shields

