

# SINGLE PAN GAS PASTA COOKER 450mm

G47

- High performance single pan pasta cooker
- Patented infra-red burner system
- Easy clean 316 grade stainless steel open pan
- 40L water capacity
- Integrated water fill and starch skimming water faucet
- Six stainless steel pasta baskets supplied
- Hinged basket drain stand
- Safety cut-out thermostat for empty pan/water boil out
- Stainless steel exterior
- Easy clean
- Easy service
- Fully modular



G47

## Overall Construction

- Pan 1.5mm 316 stainless steel
- Bull nose welded 1.5mm 304 stainless steel
- Splashback 1.2mm 304 stainless steel
- Side panels 1.2mm 304 stainless steel
- Double skin door with 0.9mm 304 stainless exterior
- 25mm (1") skimming overflow and pan drains drain valve
- 63mm dia. heavy-duty 1.2mm 304 stainless steel legs with adjustable feet
- 6 stainless steel baskets with moulded handles
- 304 stainless steel wire basket support grid in pan

## Controls

- Large easy to use knob - heat resistant reinforced
- Variable high boil to standby simmer burner control
- Fine adjustment water faucet for pan filling and water refreshing/starch skimming
- Pan protection safety cut-out thermostat
- Millivolt gas valve system (no electrical supply)
- Flame failure protection on pilot
- Piezo ignition to standing pilot burner

## Cleaning and Servicing

- Open stainless steel pan for easy clean
- Hinged basket drain stand
- Removable basket support grid
- 25mm (1") drain valve for effective draining
- Easy clean stainless steel exterior
- Access to all parts from front of unit

# SINGLE PAN GAS PASTA COOKER 450mm

G47

## Specifications

### Pan Size

Water capacity 40L  
Width 365mm  
Length 405mm  
Basket immersion depth 165mm

### Baskets

6 stainless steel perforated baskets with moulded plastic handles 125mm x 165mm x 180mm deep  
Stainless steel wire basket support grid

### Burners

1 x infra-red burner

### Gas Power

47MJ/hr, 13kW Natural gas  
46MJ/hr, 12.8kW LP gas

### Gas Connection

R<sup>3</sup>/<sub>4</sub> (BSP) male.  
All units supplied with Natural and LP gas regulator

### Water Connection

Cold water connection 50mm from left hand side, 556mm from rear and 140mm from floor  
R<sup>1</sup>/<sub>2</sub> (BSP) male

### Drain Connection

Drain must be connected to system suitable for boiling water discharge  
1" BSP Male connection 118mm from left hand side, 470mm from rear, and 165mm from floor

### Dimensions

Width 450mm  
Depth 812mm  
Height 915mm  
Incl. splashback 1085mm

### Nett weight

82kg

### Packing data

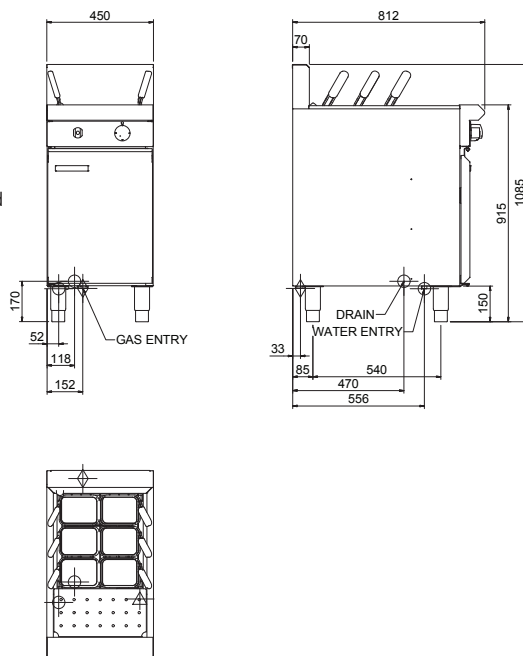
0.54m<sup>3</sup>, 124kg  
Width 870mm  
Depth 495mm  
Height 1255mm

### Gas types

Available in Natural gas and LP gas, please specify when ordering  
Units supplied complete with gas type conversion kits  
Other gas types on request

### Options

Rectangular baskets 320mm x 165mm x 180mm deep  
Square baskets 165mm square x 180mm deep  
Side splash guards  
Joining caps



**WA DEALER**  
**PRACTICAL PRODUCTS PTY LTD**

PH: 08 9302 1299  
51 Paramount Dr Wangara WA 6065  
sales@practicalproducts.com.au  
www.practicalproducts.com.au