



INLINE

GN SERIES 6x 1/1 PANS IN-COUNTER REFRIGERATED

RANGE	INLINE GN SERIES
TEMPERATURE	REFRIGERATED
MODEL	IN-GNC06
INSTALLATION	IN-COUNTER
REFRIGERATION	INTEGRAL, R513A
HEIGHT	768mm (without gantry)
	1126mm (with flat self-serve gantry)
WIDTH	2340mm
DEPTH	805mm

CORE PRODUCT TEMPERATURE	+2°C – +4°C
ENVIRONMENTAL TEST CONDITIONS	CLIMATE CLASS 3 25°C / 60% RH
CABINET CLASSIFICATION	3M1

FEATURES

- High energy efficiency: 1.2 kWh per hour (average)
- Maintains an average of +2°C - +4°C core product temperature at Climate Class 3 25°C/60%RH

Refrigerated Display

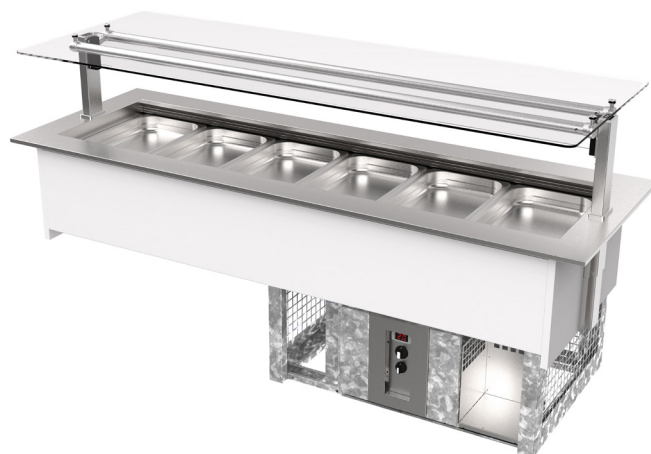
- Designed to be installed into joinery: flush-mount, over-mount or under-mount
- Three levels allowing deck trays to be positioned from 150mm deep below the air curtain
- Merchandise with GN pans (accessories) or use your own displayware
- Reversible deck trays provide ice display option

Operational Excellence

- Engineering excellence and heavy duty build quality provide years of trouble free operation
- Double-skin insulated well
- Easy to clean - cabinets can be cleaned and serviced with many parts operator removable for simple safe access
- Automatic intelligent active defrost cycle
- Manual condensate removal or plumb to waste
- With regular preventative maintenance by a technician, the life of the cabinet can be extended
- Ability to remote the control panel up to 2m away from the appliance: Temperature, Power, Refrigeration
- Fully integral refrigeration system

Gantry (Option)

- Constructed from toughened safety glass and fitted with 50,000 hour LED lighting at 1500 lumens per metre



Showing : Inline GN Series refrigerated in-counter 6x 1/1 pans, fitted with flat self-serve gantry (option) and GN pans (accessories)

OPTIONS & ACCESSORIES

- Remote refrigeration /plumb to waste
- Gantries: Flat self-serve, curved self-serve, flat serve-over
- GN pans (various sizes)
- GN dividers
- Auto Condensate Removal (ACR) and vapour extraction fan (integral refrigeration)
- Turnkey buffet solution with joinery



Please contact FPG to discuss your requirements for meeting country-specific standards.



INLINE

GN SERIES 6x 1/1 PANS IN-COUNTER REFRIGERATED

REFRIGERATION DATA

MODEL	CORE PRODUCT TEMPERATURE	ENVIRONMENTAL TEST CONDITIONS	REFRIGERATION	REFRIGERANT	CONDENSATE REMOVAL
IN-GNC06	+2°C – +4°C	Climate Class 3 - 25°C / 60% RH	Integral	R513A	Manual or plumb to waste/ACR ¹

¹Option.

ELECTRICAL DATA

MODEL	VOLTAGE	PHASE	CURRENT	E24H (kWh)	kWh per hour (average)	IP RATING	MAINS		LED LIGHTING		
							CONNECTION	CONNECTION PLUG ²	HOURS	LUMENS	COLOUR
IN-GNC06	220-240 V	Single	4.6 A	28.8	120	IP 22	3 metre, 3 core cable	10 amp, 3 pin plug	N/A	N/A	N/A
GANTRY (Option)	220-240 V	Single	0.4 A	2.4	0.10	IP 22	Wired to GN	N/A	50,000	1500 per metre	Natural
ACR (Option)	N/A	N/A	4.0 A	24.0	100	N/A	N/A	N/A	N/A	N/A	N/A

²Please advise country to change plug specification.

CAPACITY, ACCESS & CONSTRUCTION

MODEL	DISPLAY AREA (DECK TRAYS)	NO. OF 1/1 PANS ³	DECK TRAY LEVELS	DRAIN DIAMETER	CHASSIS CONSTRUCTION
IN-GNC06	1.04 m ²	Accommodates 6	3 levels	19mm	Stainless 304 and mild steel

³Accessory.

DIMENSIONS WITHOUT GANTRY

MODEL	H x W x D mm (Uncrated)	MASS (Uncrated)
IN-GNC06	768 x 2340 x 805	190 kg

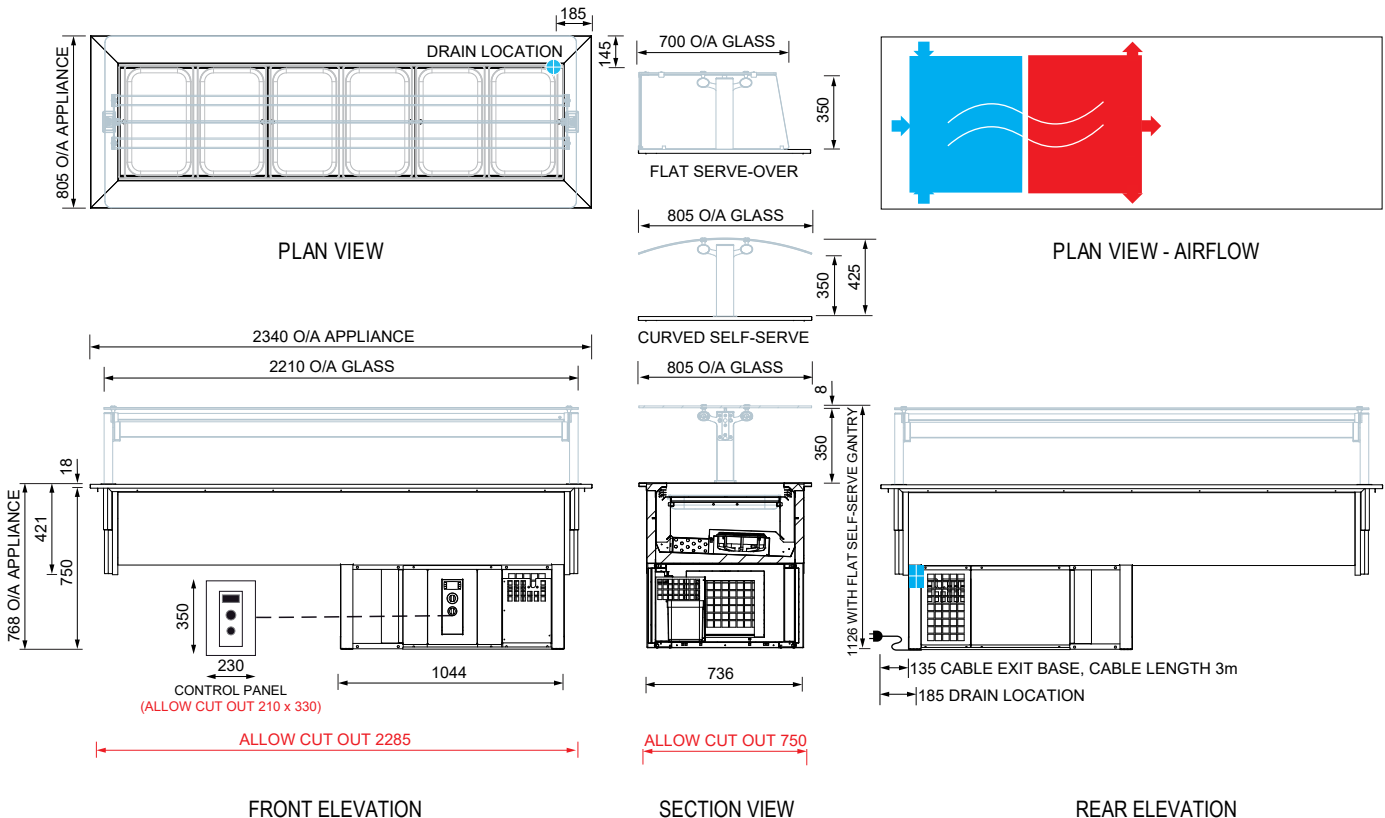
Crated weights and dimensions vary. Please contact us for information on your shipment.

Installation note:

Model cutout dimensions: IN-GNC06 models require 2285 x 750mm benchtop cutout for over-mount (see product manual for installation guide for flush and under-mount options).

UNOBSTRUCTED AIRFLOW MUST BE MAINTAINED TO ENSURE UNIT PERFORMANCE AND MAINTAIN WARRANTY.

Elevations show cabinet fitted with flat self-serve gantry (option) and GN pans (accessories), and include other gantry options available.



More information including technical data and installation guidelines is available from the Product Manual published on our website.

In line with our policy to continually develop, improve and support our products, Future Products Group Ltd reserves the right to change specifications and design without notice.

WA DEALER

PRACTICAL PRODUCTS PTY LTD

PH: 08 9302 1299
51 Paramount Dr Wangara WA 6065
sales@practicalproducts.com.au
www.practicalproducts.com.au