



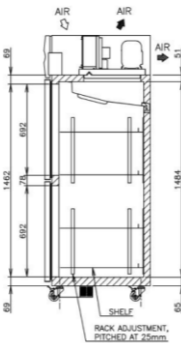
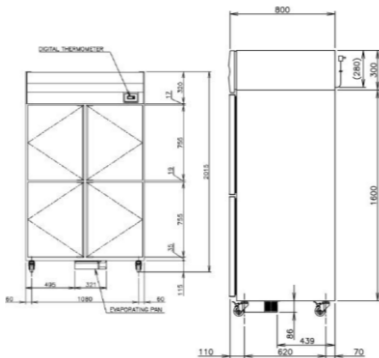
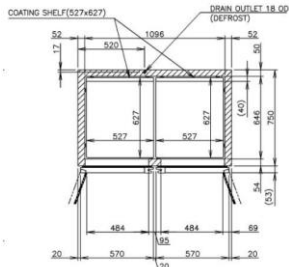
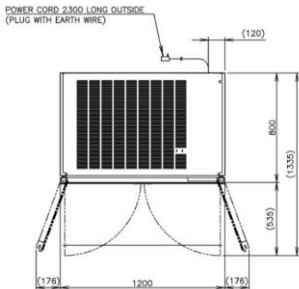
PRODUCT FEATURES

- Split doors and Upright series.
- Stainless steel interior and exterior.
- Programmable electronic controller and display.
- Standard with 8 x shelves.
- 2 years parts and labour warranty.
- Comes standard with 4 x lockable (115 mm) castors (not legs).



TECHNICAL DRAWING

PRODUCT SPECIFICATION



Interior	Stainless Steel, ABS Plastic (Doors)
Exterior	Stainless Steel, Galvanized Steel (Top,Rear,Bottom)
Max Storage Capacity	1047L
Temperature Control	Microprocessor adjustable from -23°C to -7°C
Evaporator	Fin & Tube type
Outside Dimensions	1200mm (W) x 800mm (D) x 2015mm(H)
Inside Dimensions	1096mm (W) x 646mm (D) x 1484mm (H)
Refrigeration System	Forced Air Circulation
Weight Net/ Gross (kg)	149 / 180
AC Supply Voltage	1 PHASE 220 - 240V 50Hz /10amp Plug
Amperage	Rated: 4.9A Starting: 15.6A
Refrigerant	R404A
Operating Conditions	Ambient Temp.: 5-43°C Voltage Range: Rated Voltage ±6%

INSTALLATION REQUIREMENTS

- Equipment should not be located in direct sunlight or next to sources of high heat.*
- Allow at least 50 cm clearance between the front panel air inlet/outlet and the wall or other equipment for proper air circulation.*

*Refer to manual for full installation & maintenance requirements.



WA DEALER
PRACTICAL PRODUCTS PTY LTD

PH: 08 9302 1299

51 Paramount Dr Wangara WA 6065

sales@practicalproducts.com.au

www.practicalproducts.com.au

