



HOSHIZAKI

KM-660 MAJ-E

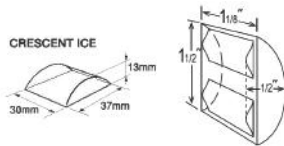
Crescent Ice Maker



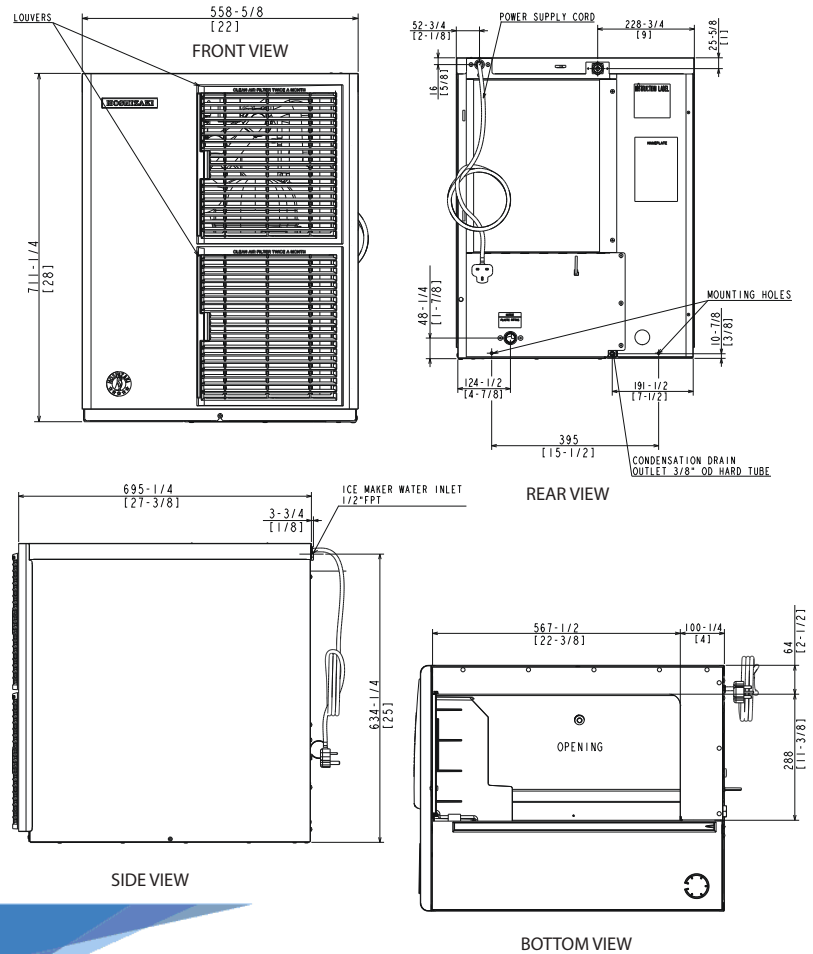
PRODUCT FEATURES

- Individual premium crescent cube.
- Stainless steel evaporator.
- Snap fit parts for easy cleaning.
- Protected by HoshiGuard Antimicrobial Agent.
- CycleSaver Design.
- EverCheck alert system.
- Durable stainless steel exterior.
- Removable air filters.
- 3 year parts & labour on the entire unit, 5 year parts & labour on the evaporator, 5 year (parts only) on compressor and air cooled condenser coil.

CUBE SIZE:



TECHNICAL DRAWING



WA DEALER
PRACTICAL PRODUCTS PTY LTD

PH: 08 9302 1299
51 Paramount Dr Wangara WA 6065
sales@practicalproducts.com.au
www.practicalproducts.com.au

PRODUCT SPECIFICATION

Production Capacity per 24hours	Approx. 280kg @21°C Air temp; 10°C Water Approx. 262kg @32°C Air temp; 21°C Water
Max Storage Capacity	Select Bin & Kit
Freeze Cycle Time	Approx. 22-26 Min
Ice Production Per cycle	Approx. 4.9kg/480pcs
Dimensions	559mm (W) x 695mm (D) x 711mm (H)
Cooling	Air
Weight Net/Gross (kg)	59 / 68
AC Supply Voltage	1 PHASE 220-240V 50Hz / 10amp Plug
Amperage	Running: 8.4A
Refrigerant Charge	R404A
Operating Conditions	Ambient Temp.: 7-38°C Water Supply Temp.: 7-32°C Water Supply Pressure: 0.07-0.8MPa (0.7-8bar) Voltage Range: 198-254V

HOSHIZAKI



Descriptions and specifications are subject to change at any time, without notice.
Illustrations for demonstration purposes.

Copyright © 2020 Hoshizaki Lancer Pty Ltd. All right reserved. E&OE Date: Sept 2020