

# TWT-93D-6-HC

 Deep Worktop Counter Refrigerator, 6 Drawers



| Dimensions                         |  | Build                 |  | Technical                   |  |
|------------------------------------|--|-----------------------|--|-----------------------------|--|
| External Width (mm)                | 2369   | Number of Drawers     | 6  | Temperature Holding         | 0.5 : 3.3°C  |
| External Depth (mm)                | 823  | Exterior Construction | Stainless steel front & countertop, aluminium sides & rear | Refrigerant                 | R290   |
| External Height (mm)               | 1004   | Interior Construction | Clear coated aluminium, stainless steel base               | Voltage / Frequency / Phase | 220-240V/50-60Hz/1   |
| Exclusions                         | Depth does not include 26 mm for rear bumpers. | Air Intake Position   | Front  | Amps                        | 1.5  |
| Net Volume (Litres)                | 307  | Ventilation Position  | Front  | Wattage                     | 345  |
| Gross Volume (Litres)              | 875  | Clearance Required    | Zero back and sides  | Climate Class               | 5  |
| Per Drawer Capacity (max depth mm) | 1x 2/1 GN (200)                                | Cord Length (Meters)  | 2.13   | Operating Statement         | Heavy Duty: This appliance is intended for use in ambient temperatures up to 40°C. |
| Unpackaged Weight (kg)             | 298  | Standard w/ Locks     | Not standard (SPEC3 option)                                | Testing Standard            | EN 16825   |
| Packaged Weight (kg)               | 309  |                       |  | EEC                         | B  |
| Packaged Dimensions (W x D x H mm) | 2540 x 966 x 1245                              |                       |  | EEL                         | 36.4   |
| Supplied Supports                  | ø 127 mm castors (158 mm height)               |                       |  | kWh/24hr                    | 2.57   |
|                                    |  |                       |  | kWh/Annum                   | 938  |
|                                    |  |                       |  | Defrost Type                | Auto   |

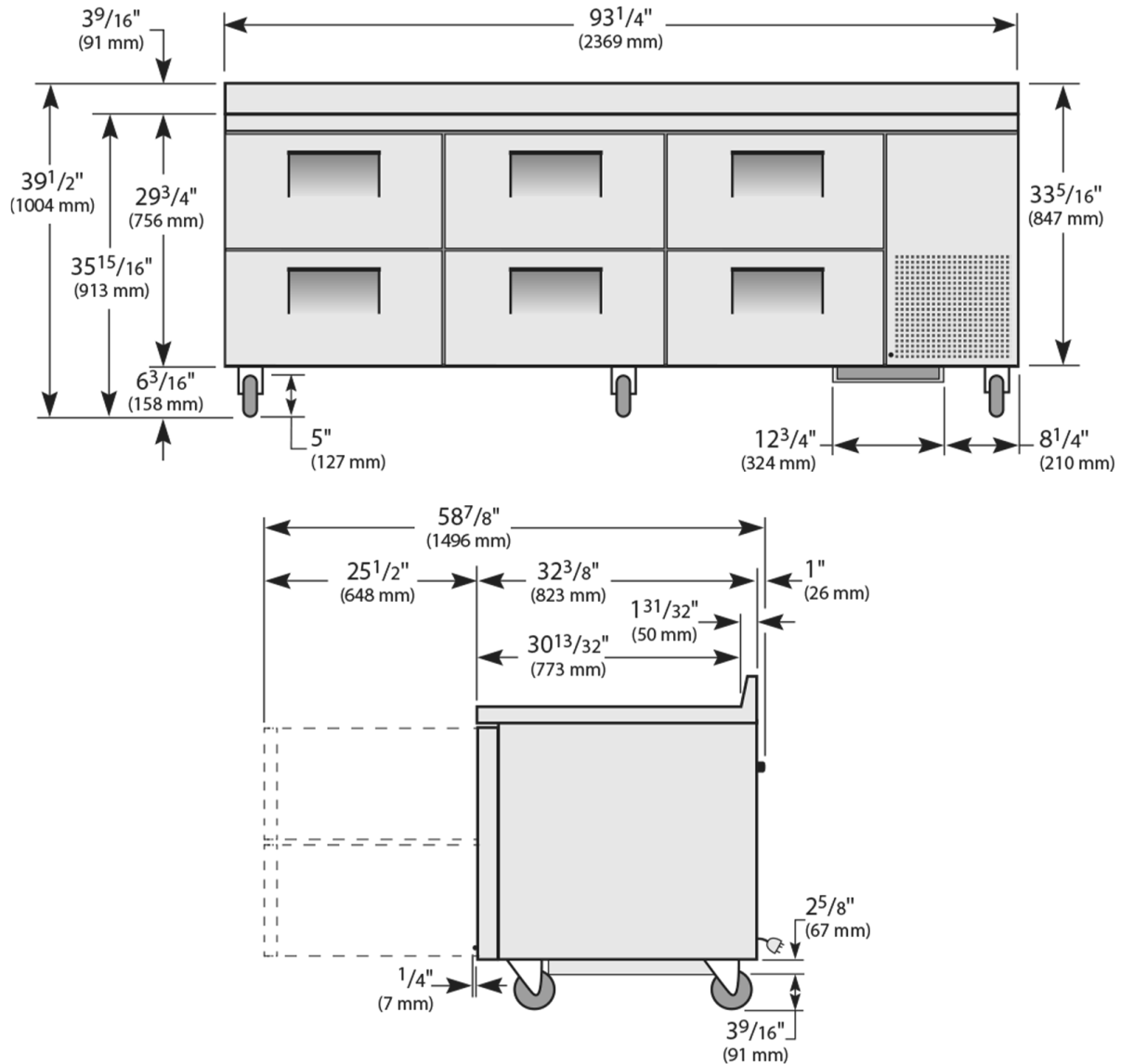


Specifications subject to change without notice.  
 Technical data above related to energy use based on testing of 50Hz or Dual Frequency models  
 Chart dimensions rounded up to the next whole millimeter (inches rounded up to the 1/8")



# TWT-93D-6-HC

 Deep Worktop Counter Refrigerator, 6 Drawers



**WARRANTY**  
 PARTS, COMPRESSOR AND LABOUR  
 5 YEARS



Specifications subject to change without notice.  
 Technical data above related to energy use based on testing of 50Hz or Dual Frequency models  
 Chart dimensions rounded up to the next whole millimeter (inches rounded up to the 1/8")

**WA DEALER**  
**PRACTICAL PRODUCTS PTY LTD**

PH: 08 9302 1299  
 51 Paramount Dr Wangara WA 6065  
[sales@practicalproducts.com.au](mailto:sales@practicalproducts.com.au)  
[www.practicalproducts.com.au](http://www.practicalproducts.com.au)

**True**  
 REFRIGERATION