

**WARRANTY 3 YEARS**  
PARTS & LABOUR



**Turbo air**



## BACK BAR

**Fridge**  
**TBB-4SGD**

### FEATURES / BENEFITS

#### ■ EFFICIENT REFRIGERATION SYSTEM

Turbo Air's refrigerators are designed with oversized and balance refrigeration systems. These include efficient evaporators and condensers for faster cooling and greater efficiency.

#### ■ FORCED AIR COOLING SYSTEM

Fast cooling and balanced temperature throughout the cabinet.

#### ■ STAINLESS STEEL COUNTERTOP AND INTERIOR

The exterior of cabinet is constructed with heavy gauge reinforced stainless steel countertop and wear-resistant black vinyl coated galvanized steel. Interior is stainless steel floor and door liners with white painted galvanized steel inside walls. Turbo Air Back Bar m guarantees utmost in cleanliness and long product life. It also can add a touch of style to the most refined setting.

#### ■ LED INTERIOR LIGHTING FOR ALL MODELS

Bright LED interior lighting is specifically designed for perfect visibility throughout the interior.

#### ■ HIGH DENSITY POLYURETHANE INSULATION

The entire cabinet structure is foamed-in-place using high density, CFC free polyurethane insulation.

#### ■ ADJUSTABLE, HEAVY DUTY, PE (POLYETHYLENE) COATED WIRE SHELVES

#### ■ ERGONOMICALLY DESIGNED DOORS

Customers' fatigue fades away with easy grip handles and doors that open effortlessly. These features along with self-closing doors make this the ultimate choice in customer convenience.

#### ■ SIDE MOUNT COMPRESSOR UNIT

By positioning the compressor on the side of the unit, refrigerators can now be serviced without being moved.



Easy to Clean Air Filter  
Front Access



#### Optional features

- 125mm castors fitted
- 180mm, 105mm, 80mm castors optional
- Adjustable legs 100-155mm, 70-90mm

REFRIGERATOR MANUFACTURER  
**Turbo air**

■ **WARRANTY: 3 Year Parts and Labour Warranty**

# BACK BAR

## Fridge TBB-4SGD

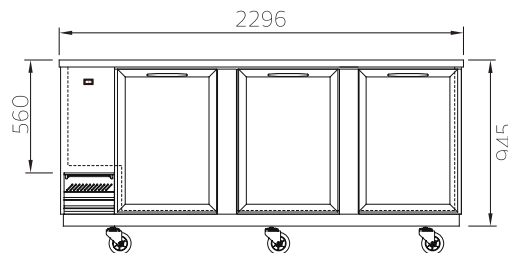
|   |   |
|---|---|
| Model   | TBB-4SGD                                |
| Refrigerant   | R-134a                                  |
| COMP (HP)   | 1/3HP                                   |
| POWER INPUT(W)  | 461W                                    |
| Energy consumption  |   |
| AMPS(A)   |   |
| Capacity  | 940                                     |
| Product Dimension W                                       | 2294                                    |
| Product Dimension D                                       | 692                                     |
| Product Dimension H                                       | 1066                                    |
| Weight  | 237                                     |
| Stainless steel   | EGI (BLACK)                             |
| Features  | SCC                                     |
| Max GN Pan depth  |   |
| GN Pan  |   |
| Door lock   | Yes                                     |
| Adjustable Shelves  | 8                                       |
| LED light   | yes                                     |
| Temperature range   | 0~10°C                                  |
| Ambient temperature                                       |   |
| Drainage / Forced Evaporation                             | Yes                                     |
| Temperature control                                       | Digital control                         |
| Cooling type  | FAN COOLING                             |
| Glass Type (Low-e / Heater / How many layer of the glass) | Double Pane Glass Door with Low-E glass |

Design and specifications subject to change without notice.  
Actual Shipping weight may differ due to extra packing materials for product protection.

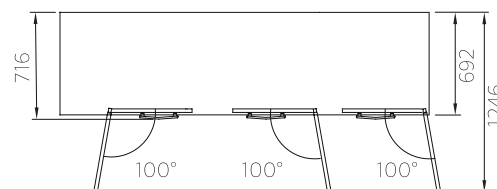
- DOOR LOCKS STANDARD
- SELF-CONTAINED SYSTEM
- 4" SWIVEL CASTERS STANDARD

### PLAN VIEW

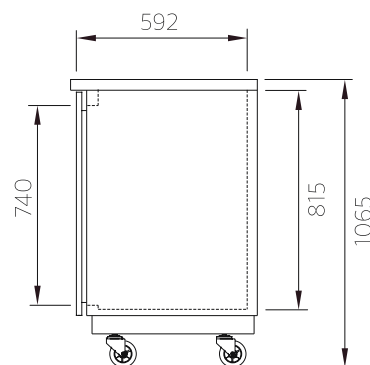
(unit : mm)



### FRONT VIEW



### TOP VIEW



### SIDE VIEW

**WARRANTY 3 YEARS**  
PARTS & LABOUR



**Turbo air**



PH: 08 9302 1299  
51 Paramount Dr Wangara WA 6065  
sales@practicalproducts.com.au  
www.practicalproducts.com.au