

# HE2RSSBA



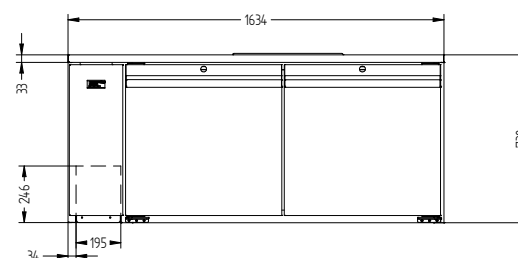
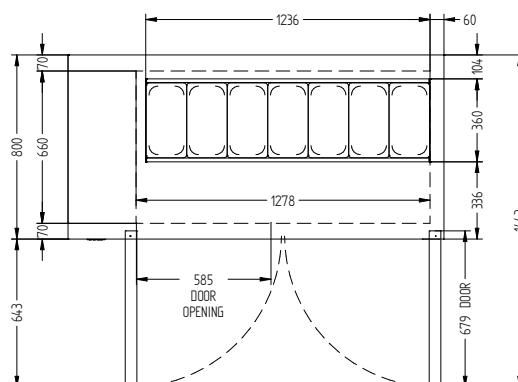
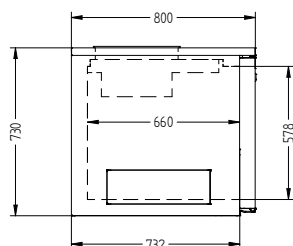
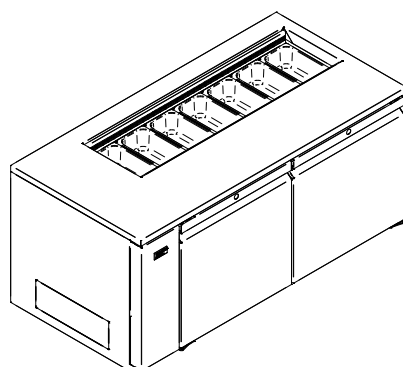
CATEGORY FOODSERVICE UPRIGHTS

RANGE **Emerald**

UNIT REFRIGERATOR

TYPE REMOTE

DOORS 2



## SPECIFICATIONS

CAPACITY LITRES	610
TEMPERATURE	1°C / 4°C
DIMENSIONS - W X D X H (ON 150 MM H LEGS)	1634 W x 800 D x 880 H
WEIGHT UNPACKED (KG)	150

## STANDARD INCLUSIONS \*\*\*

DOOR TYPE	Standard: SD (Solid Door) Optional: DR (Drawer)
FINISH (INTERIOR AND EXTERIOR EXCLUDING REAR AND UNDER)	SS (Stainless Steel)
SHELVES/DOOR	1
BLOWN AIRWELL (100MM DEEP 1/3 PANS INCLUDED)	7 X 1/3 PANS

## ELECTRICAL

POWER SUPPLY		10 amp
FRIDGE MODELS	RUNNING AMPS	0.5

## GAS TYPE

REFRIGERANT	FRIDGE MODELS	R404a
-------------	---------------	-------

## REFRIGERATION WATTAGES FOR REMOTE UNITS

FRIDGE MODELS - SOLID DOOR BA	750 @ -10°C SST
-------------------------------	-----------------



**WA DEALER**  
**PRACTICAL PRODUCTS PTY LTD**

PH: 08 9302 1299  
51 Paramount Dr Wangara WA 6065  
sales@practicalproducts.com.au  
www.practicalproducts.com.au