

HE3RSSBA



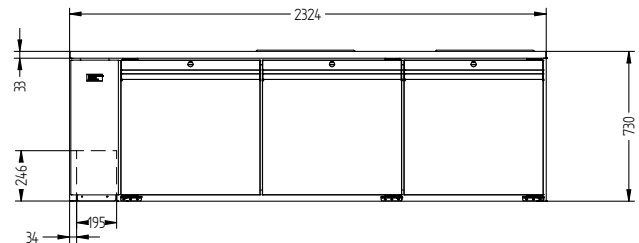
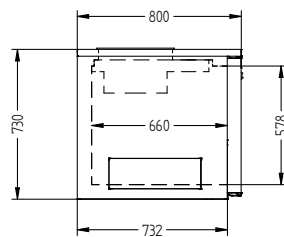
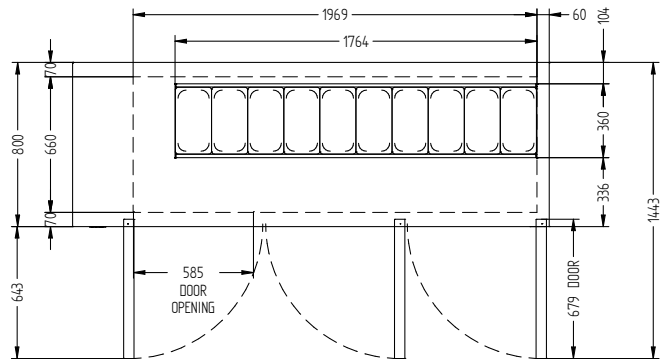
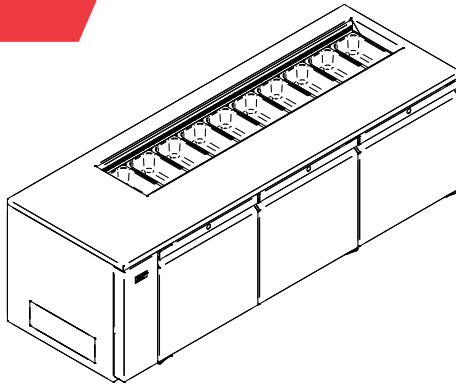
CATEGORY FOODSERVICE UPRIGHTS

RANGE **Emerald**

UNIT REFRIGERATOR

TYPE REMOTE

DOORS 3



SPECIFICATIONS

CAPACITY LITRES	900
TEMPERATURE	1°C / 4°C
DIMENSIONS - W X D X H (ON 150 MM H LEGS)	2324 W x 800 D x 880 H
WEIGHT UNPACKED (KG)	200

STANDARD INCLUSIONS ***

DOOR TYPE	Standard: SD (Solid Door) Optional: DR (Drawer)
FINISH (INTERIOR AND EXTERIOR EXCLUDING REAR AND UNDER)	SS (Stainless Steel)
SHELVES/DOOR	1
BLOWN AIRWELL (100MM DEEP 1/3 PANS INCLUDED)	10 X 1/3 PANS

ELECTRICAL

POWER SUPPLY		10 amp
FRIDGE MODELS	RUNNING AMPS	0.6

GAS TYPE

REFRIGERANT	FRIDGE MODELS	R404a
-------------	---------------	-------

REFRIGERATION WATTAGES FOR REMOTE UNITS

FRIDGE MODELS - SOLID DOOR BA	980 @ -10°C SST
-------------------------------	-----------------

WA DEALER
PRACTICAL PRODUCTS PTY LTD

PH: 08 9302 1299
51 Paramount Dr Wangara WA 6065
sales@practicalproducts.com.au
www.practicalproducts.com.au