

# HE3USSBA



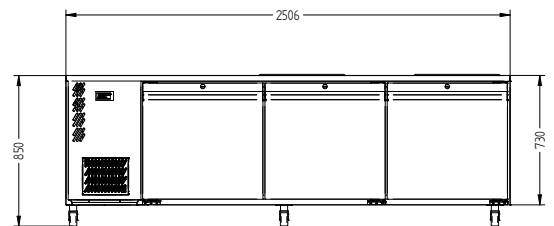
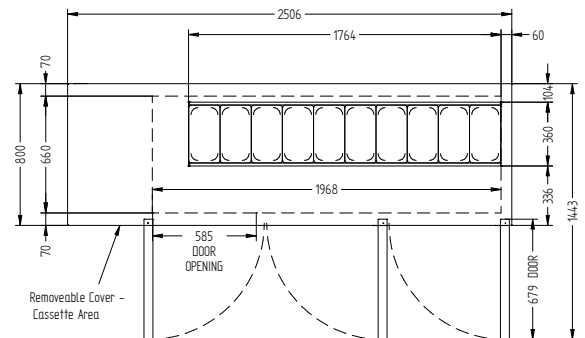
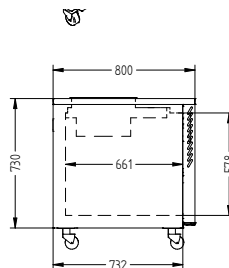
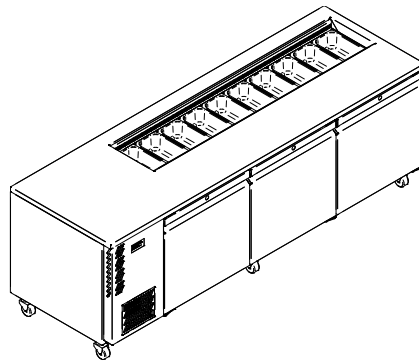
CATEGORY FOODSERVICE COUNTERS

RANGE **Emerald**

UNIT REFRIGERATOR

TYPE SELF CONTAINED

DOORS 3



## SPECIFICATIONS

CAPACITY LITRES	900
TEMPERATURE	1°C / 4°C
FRONT BREATHING	YES
DIMENSIONS - W X D X H (ON 120MM H CASTORS) MM	2506 W x 800 D x 850 H
WEIGHT UNPACKED (KG)	200

## STANDARD INCLUSIONS \*\*\*

DOOR TYPE	Standard: SD (Solid Door) Optional: DR (Drawer)
FINISH (INTERIOR AND EXTERIOR EXCLUDING REAR AND UNDER)	SS (Stainless Steel)
SHELVES/DOOR	1
BLOWN AIRWELL (100MM DEEP 1/3 PANS INCLUDED)	10 X 1/3 PANS

## ELECTRICAL

POWER SUPPLY		10 amp
BLOWN AIRWELL MODELS	RUNNING AMPS	5.2

## GAS TYPE

REFRIGERANT	FRIDGE MODELS	R134a
-------------	---------------	-------

WA DEALER  
PRACTICAL PRODUCTS PTY LTD

PH: 08 9302 1299  
51 Paramount Dr Wangara WA 6065  
sales@practicalproducts.com.au  
www.practicalproducts.com.au