

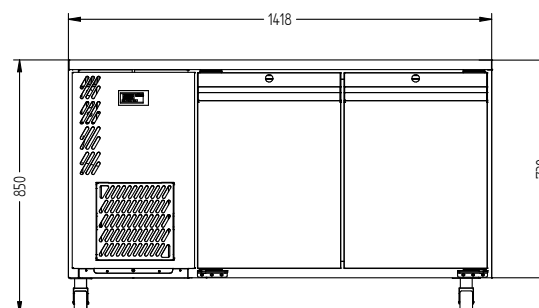
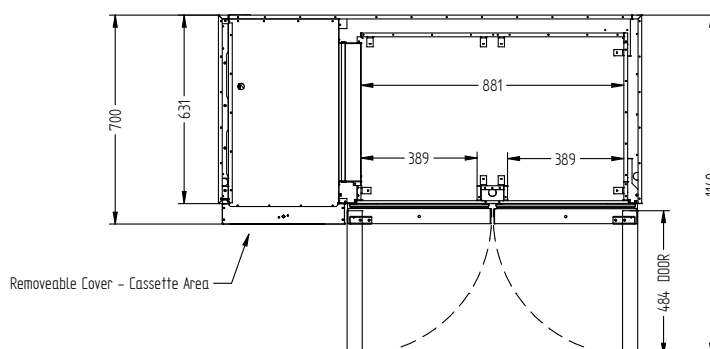
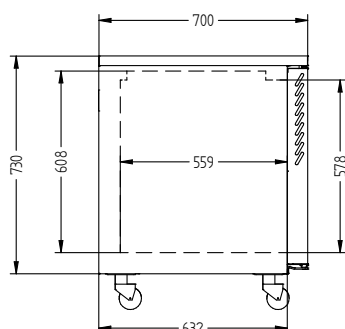
CATEGORY FOODSERVICE COUNTERS

RANGE **Opal**

UNIT FREEZER

TYPE SELF CONTAINED

DOORS 2



SPECIFICATIONS

| | |
|---|------------------------|
| CAPACITY LITRES | 350 |
| TEMPERATURE | -18°C / -22°C |
| FRONT BREATHING | YES |
| DIMENSIONS - W X D X H (ON 120 MM H CASTORS) MM | 1418 W x 700 D x 850 H |
| WEIGHT UNPACKED (KG) | 130 |

STANDARD INCLUSIONS ***

| | |
|---|---|
| DOOR TYPE | Standard: SD (Solid Door) Optional: DR (Drawer) |
| FINISH (INTERIOR AND EXTERIOR EXCLUDING REAR AND UNDER) | SS (Stainless Steel) |
| SHELVES/DOOR (ADJUSTABLE STRIPS AND CLIPS) | 2 |

GAS TYPE

| | |
|-------------|-------|
| REFRIGERANT | R404a |
|-------------|-------|

ELECTRICAL

| | |
|-----------------------------|--------|
| POWER SUPPLY | 10 amp |
| POWER CABLE LENGTH (METRES) | 2 |
| RUNNING AMPS | 4.0 |

PERFORMANCE

| | |
|------------------|-------------------------|
| KWH/24HR READING | 7 |
| TEST STANDARD | EN 16825 (Professional) |
| TEST CONDITIONS | 4 L1 |
| AMBIENT RATING | 43°C |



WA DEALER
PRACTICAL PRODUCTS PTY LTD

PH: 08 9302 1299
51 Paramount Dr Wangara WA 6065
sales@practicalproducts.com.au
www.practicalproducts.com.au