

# HO2USS



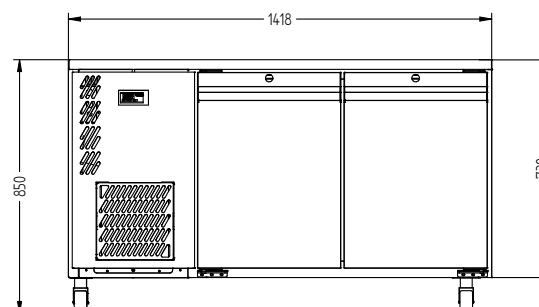
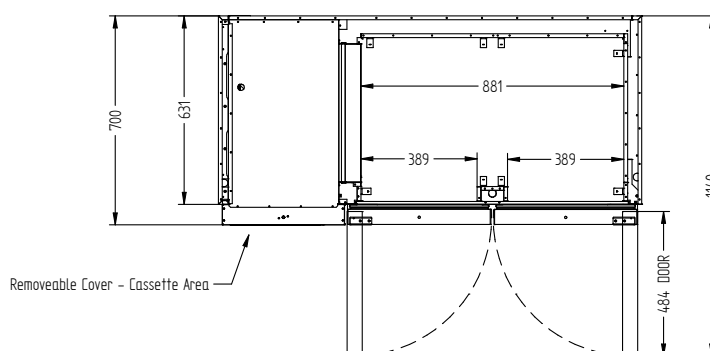
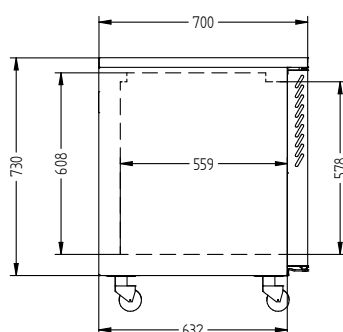
CATEGORY FOODSERVICE COUNTERS

RANGE **Opal**

UNIT REFRIGERATOR

TYPE SELF CONTAINED

DOORS 2



## SPECIFICATIONS

CAPACITY LITRES	350
TEMPERATURE	1°C / 4°C
FRONT BREATHING	YES
DIMENSIONS - W X D X H (ON 120 MM H CASTORS) MM	1418 W x 700 D x 850 H
WEIGHT UNPACKED (KG)	130

## STANDARD INCLUSIONS \*\*\*

**DOOR TYPE** Standard: SD (Solid Door) Optional: DR (Drawer), PT (Pass Through)

**FINISH (INTERIOR AND EXTERIOR EXCLUDING REAR AND UNDER)** SS (Stainless Steel)

**SHELVES/DOOR (ADJUSTABLE STRIPS AND CLIPS)** 2

## GAS TYPE

**REFRIGERANT** R134a

## ELECTRICAL

POWER SUPPLY	10 amp
POWER CABLE LENGTH (METRES)	2
RUNNING AMPS	2.2

## PERFORMANCE

KWH/24HR READING	2.7
TEST STANDARD	EN 16825 (Professional)
TEST CONDITIONS	4 M1
AMBIENT RATING	43°C

**WA DEALER**  
**PRACTICAL PRODUCTS PTY LTD**

PH: 08 9302 1299  
51 Paramount Dr Wangara WA 6065  
sales@practicalproducts.com.au  
www.practicalproducts.com.au