

UBC20



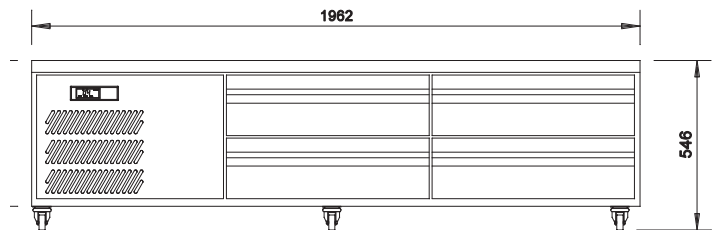
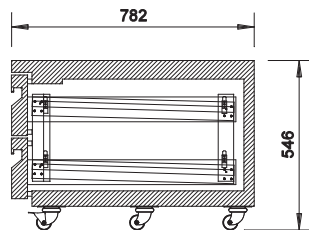
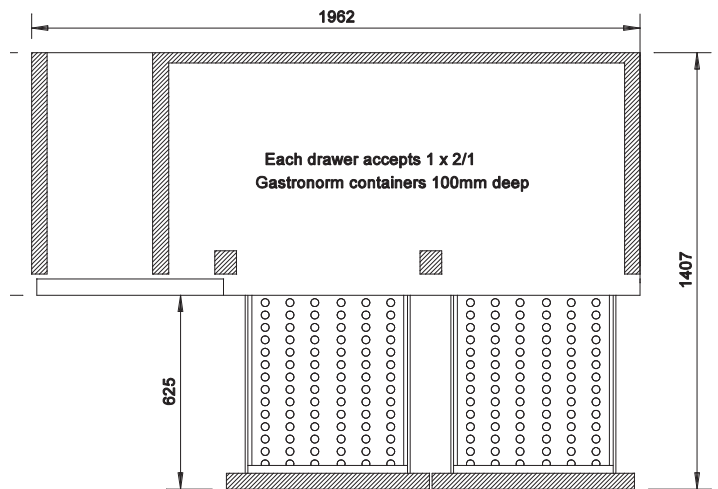
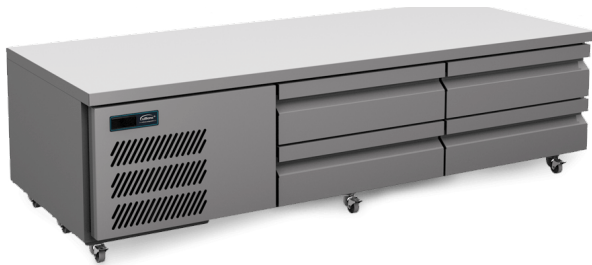
CATEGORY FOODSERVICE SPECIALISED

RANGE **Under Broiler Counter**

UNIT REFRIGERATOR

TYPE SELF CONTAINED

DRAWERS 4



SPECIFICATIONS

CAPACITY 1/1 GN PAN (100 MM DEEP)	8
TEMPERATURE - 43°C AMBIENT ENVIRONMENT	1°C / 4°C
DIMENSIONS - W X D X H (ON CASTORS) MM	1962 W x 782 D x 546 H
WORKTOP LOAD LIMIT (KG)	290
WEIGHT UNPACKED (KG)	160

STANDARD INCLUSIONS ***

DRAWERS	4
FINISH (INTERIOR AND EXTERIOR EXCLUDING REAR AND UNDER)	SS (Stainless Steel)

ELECTRICAL

POWER SUPPLY	10 amp
POWER CABLE LENGTH (METRES)	2
RUNNING AMPS	2.2

GAS TYPE

REFRIGERANT	R134a
-------------	-------



PH: 08 9302 1299
51 Paramount Dr Wangara WA 6065
sales@practicalproducts.com.au
www.practicalproducts.com.au